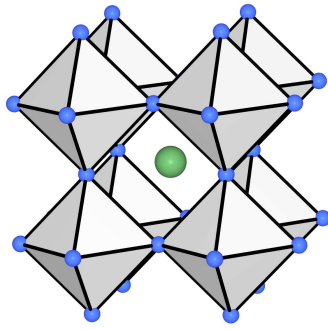
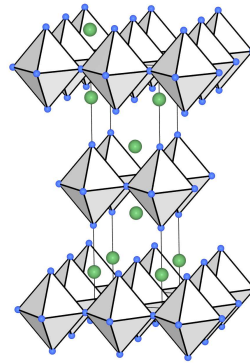


2.3. Supraleiter (Fortsetzung)

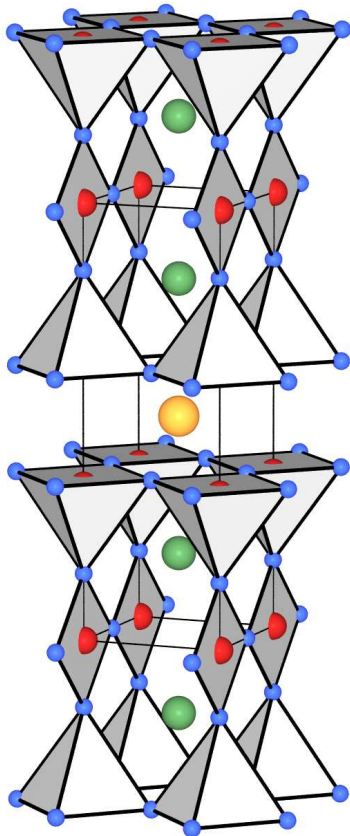
2.3.3. High- $T_c$ -Materialien



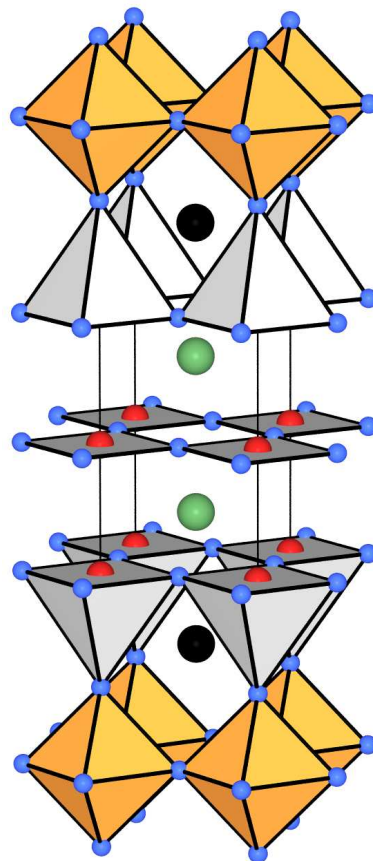
Perovskit  $\text{CaTiO}_3$



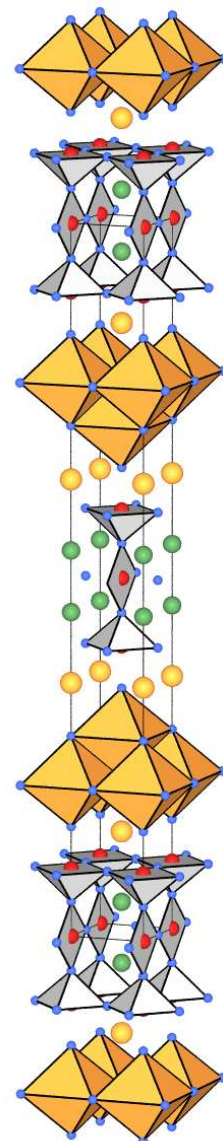
$\text{La}_{1.8}\text{Sr}_{0.2}\text{CuO}_4$  ( $\text{K}_2\text{NiF}_4$ -Strukturtyp)



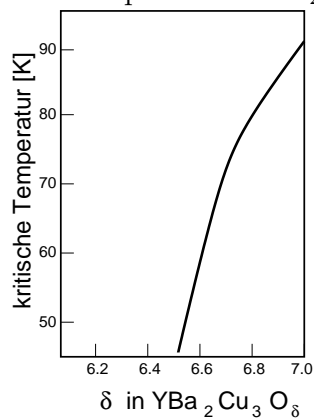
1-2-3-Supraleiter  $\text{YBa}_2\text{Cu}_3\text{O}_{6+x}$



Tl-1-2-2-3:  $\text{TlBa}_2\text{Ca}_2\text{Cu}_3\text{O}_{8+x}$



Tl-2-2-2-3:  
 $\text{Tl}_2\text{Ba}_2\text{Ca}_2\text{Cu}_3\text{O}_{10}$



$\text{YBa}_2\text{Cu}_3\text{O}_\delta$ : Einfluß des Sauerstoffgehaltes  $\delta$  auf  $T_c$