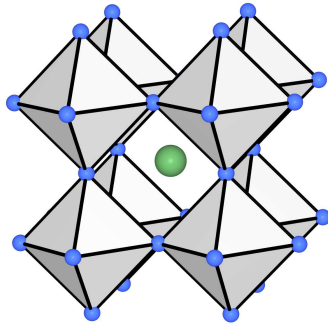
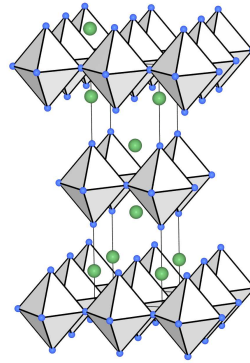


Supraleiter (Fortsetzung)

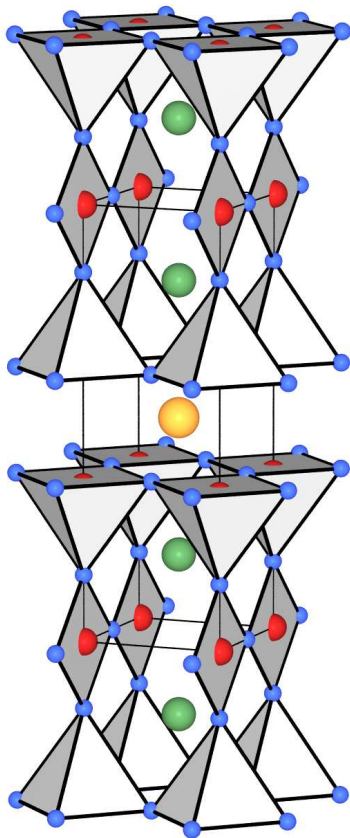
3. High- T_c -Materialien



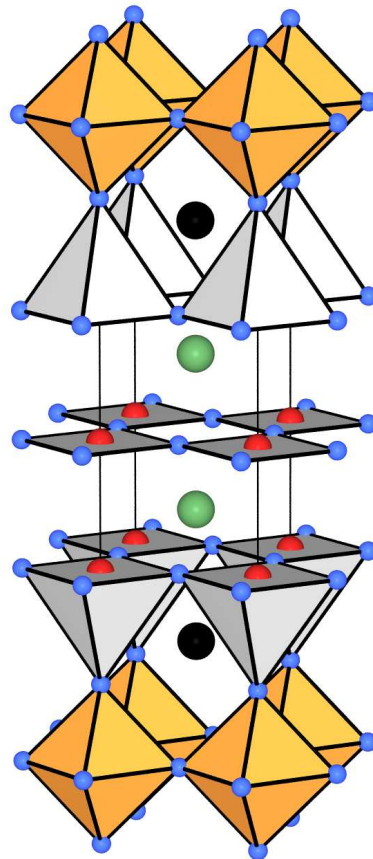
Perowskit CaTiO_3



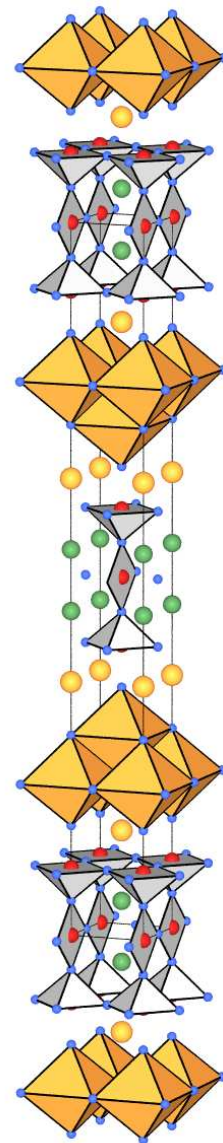
$\text{La}_{1.8}\text{Sr}_{0.2}\text{CuO}_4$ (K_2NiF_4 -Strukturtyp)



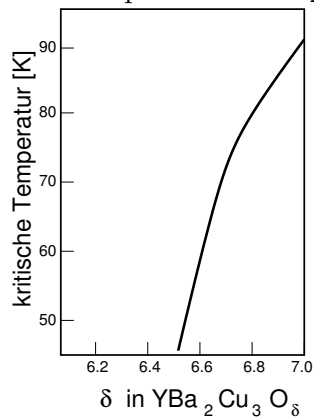
1-2-3-Supraleiter $\text{YBa}_2\text{Cu}_3\text{O}_{6+x}$



Tl-1-2-2-3: $\text{TlBa}_2\text{Ca}_2\text{Cu}_3\text{O}_{8+x}$



Tl-2-2-2-3:
 $\text{Tl}_2\text{Ba}_2\text{Ca}_2\text{Cu}_3\text{O}_{10}$



$\text{YBa}_2\text{Cu}_3\text{O}_\delta$: Einfluß des Sauerstoffgehaltes δ auf T_c