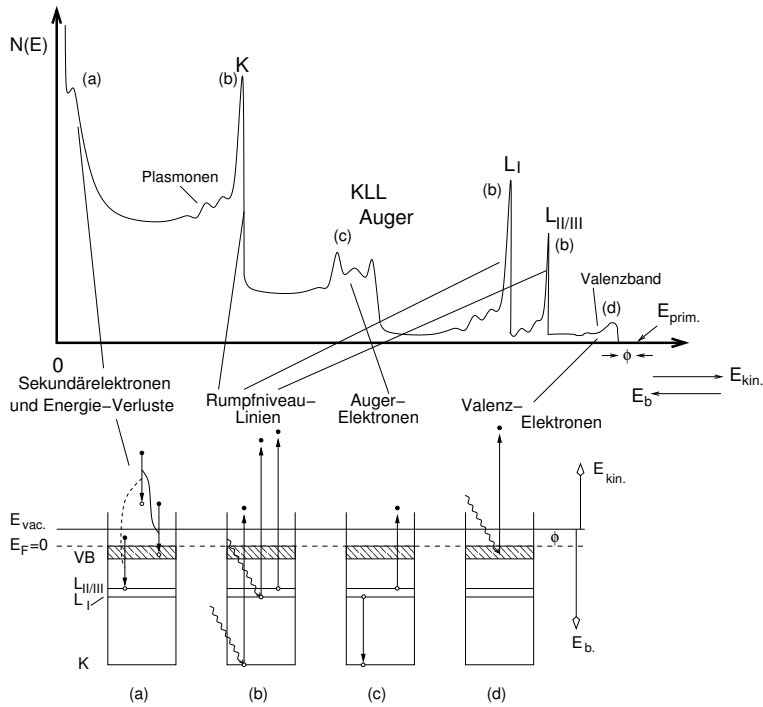
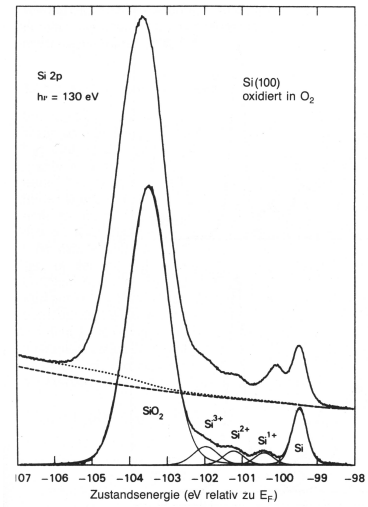


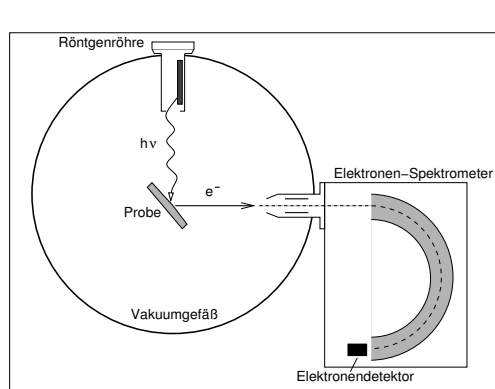
### 2.2.1. Rumpfniveau-Spektroskopie I: XPS



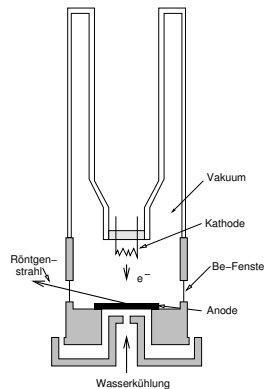
Typisches XPS-Spektrum mit Elementarprozessen



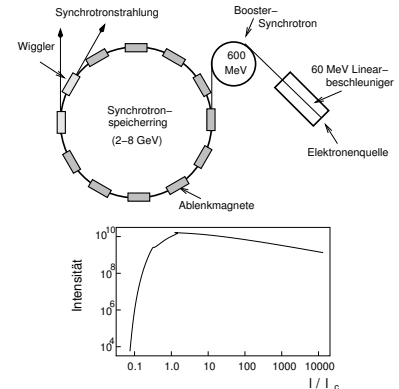
XPS-Spektrum von oxidiertem Si(100) nahe des Si 2p-Niveaus (Synchrotron, 130 eV)



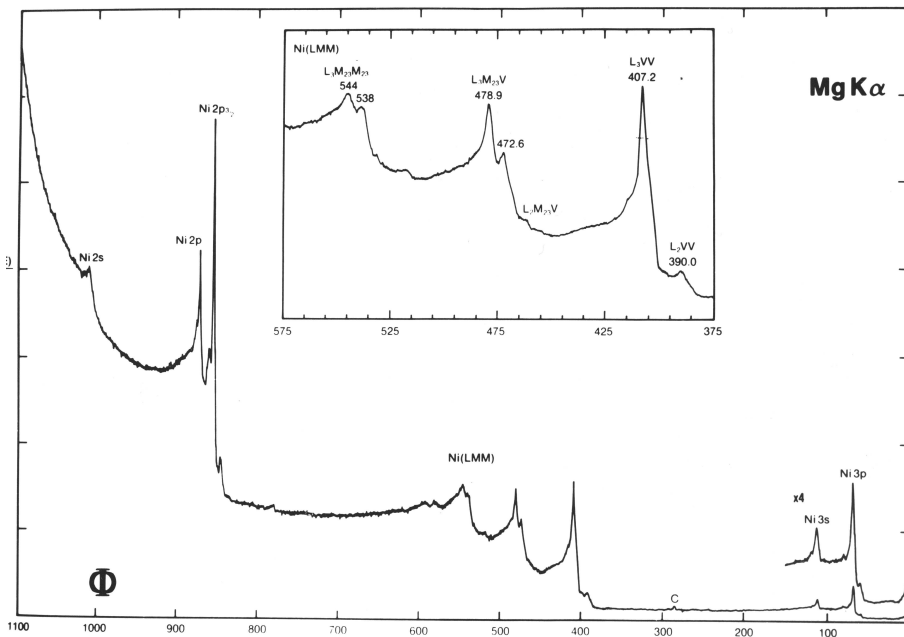
Prinzipaufbau einer XPS-Anlage



Röntgenröhre



Synchrotron



XPS-Spektrum von elementarem Ni